

ZENITON 
Solution Kit

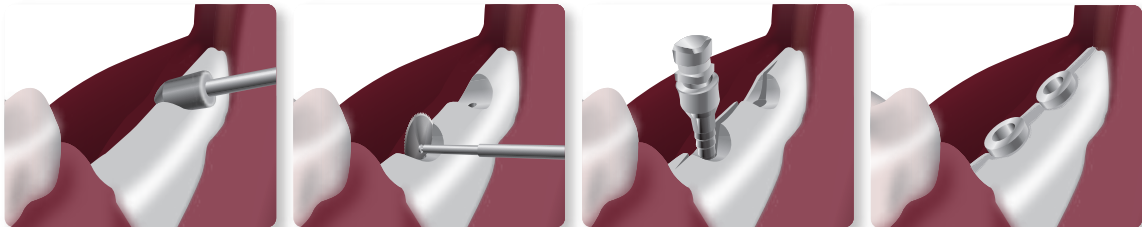
Bone Expander Kit

Introduction & Feature

- As the thread design of expander is reversed, the bone can be surely widened.
- The selection of ratchet can be diversified as the adapter compatible with Straumann Wrench is included.
- Enable to use through Implant engine & Manual use
- Color division for expander
- Enable to select types, upon user's request.

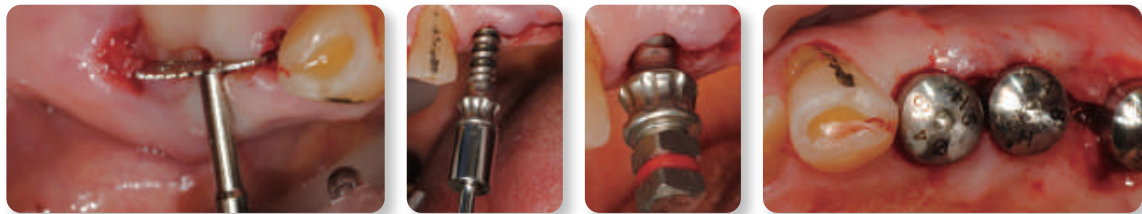


Direction for use



Crest Trimmer [800~1,200 R.P.M. recommended] Sawing [800~1,200 R.P.M. recommended] Expanding [30~50 R.P.M. recommended] Implant Placement

Clinical Case



Bone Expander Kit

Crest Trimmer



-	CT-01
---	-------

- Use for trimming and flattening the narrow & thin bone in crest width
[Recommendable R.P.M. : 800 ~ 1,200 R.P.M.]

Twist Drill



D	Ø1.8
-	TW-18

- Make a hole to push expander
[Recommendable R.P.M. : 800 ~ 1,200 R.P.M.]

Saw



D	Ø10.0
-	6100-10

- Use for sawing the narrow bone
[Recommendable R.P.M.: 800 ~ 1,200 R.P.M.]

Expander



D	Ø2.6	Ø3.0	Ø3.4	Ø3.8	Ø4.3
-	7030-1	7030-2	7030-3	7030-4	7030-5

• Use for expanding the bone sequentially to insert the implant into the narrow area in crest width.

[Recommendable R.P.M. : 30 ~ 50 R.P.M.]

Ratchet



-	RCT-01
---	--------

• Use for tightening and loosening the expander manually after connecting expander.

Ratchet Adapter



Ø3.0

D	Ø3.0
-	AT-02

• Use for extension of sinus window, after perforation

• Same tool in the Sinus Combination Kit

[Recommendable R.P.M. : 1,000 ~ 1,200 R.P.M.]

Handpiece Adapter



-	HPA-01
---	---------------

- Use for tightening and loosening the expander automatically after connecting expander.
- Handpiece is required to be connected with implant engine.
[Recommended R.P.M. : 30 ~ 50 R.P.M.]

Hand/Straumann Adapter



-	HAS-01
---	---------------

- Use by turning the expander by hands or by connecting with Straumann Ratchet Wrench.

Chisel



4801

4802

Type	Use for turning by hands	Use for malleting
-	4802	4801

- Use for expanding the bone slightly by inserting between sawed crest width.
- Included both chisels in the B Type of Bone Expander Kit.
- Available to purchase separately.