

# TITAN X<sup>eno</sup>

**Bone substitute**  
Regenerating bone, Renewing lives.



## TITAN-X details

No	Product/Weights	
25- 0510	TITAN-X 0,25g	0.45cc
05- 0210	TITAN-X 0.5g	0.8cc
10- 0210	TITAN-X 1.0g	1.5cc
20- 0210	TITAN-X 2.0g	3.0cc



Double-sealed safety package

## Features

TITAN-X contains less multiporosity ratio per gram unit.

Low-temperature processing technique allows ideal, natural surface topography, the same as human bone, stimulating osteoblast activity. Vitrification phenomenon caused by high-temperature process has been completely controlled. Pre HA structure, octacalcium phosphate crystal is found on the surface of TITAN-X, resulting in fast bone formation.

## Usage

STEP 1 : Remove any soft tissue or granulation tissue carefully and expose fresh bone.

STEP 2 : Saturate TITAN-X with patient's blood or normal saline or PRP (platelet-rich plasma.) Avoid distilled water.

Fill the defect site with the prepared TITAN-X mixture with a sterilized spatula or surgical spoon.

STEP 3 : Protect the graft mass with a membrane or PRF(platelet-rich fibrin.)

STEP 4 : Tie up the wound carefully. Exposure in the oral cavity may induce oral microorganisms that can cause infection.

## INDICATIONS

Bone regeneration and augmentation

- Alveolar ridge defect
- Extraction defect
- Sinus augmentation
- Periodontal defect

## ATTENTION

- Avoid pressure on TITAN-X particle to maintain multiporous nature.

Breaking down of TITAN-X to tiny pieces drops down the best advantages of TITAN-X

## CONTRAINDICATIONS

Following groups are not recommended to use TITAN-X

- Osteomyelitis patient
- Generalized or Localized Blood dyscrasia patient
- Heavy smokers
- Radiation therapy patient
- Diabetes
- Advanced Liver or Kidney disease
- Thyroidism etc.

## PRECAUTIONS

Effect on pediatric patients is not known

Do not overfill defected area

Do not leave defected area open

Store at the temperature range of 4-30°C [39.2-86°F]

Do not block off the blood supply to defected area

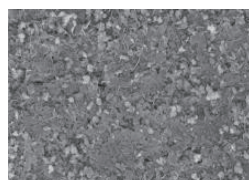
## Product Image



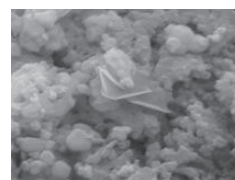
TITAN-X Granules



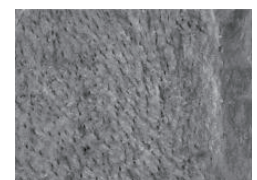
Multiporosity Ratio



SEM x 5000



Natural Rough Surface



Octacalcium Phosphate